



*“The combination of DMI and SDHI chemistries makes this a great candidate to incorporate into your fall and spring fungicide program because there will be activity against several important diseases at key times.”*

David McCall, Ph.D.  
Virginia Tech University

### CREATE YOUR OWN MASTERPIECE WITH KALIDA®

Kalida® fungicide is a **powerful premix** that provides a complete protection option against multiple troublesome diseases at the same time. With the combined power of two unique active ingredients, Fluindapyr – a new and novel FMC SDHI fungicide – and next-generation DMI, Flutriafol, Kalida® provides complete protection against *Bipolaris* leaf spot, Take-All Root Rot, Fairy Ring, Mini Ring, and Large Patch. As a foundation fungicide, Kalida® provides rapid uptake, longevity, and controls your toughest diseases as a standalone or part of a program.

*“It is exciting to have 2 new fungicide active ingredients in the line-up against fairy ring. In my field trials, Kalida® fungicide was safe with no issues in terms of turf injury or phytotoxicity.”*

Mike Fidanza, Ph.D.  
Penn State University

### KEY DISEASES:

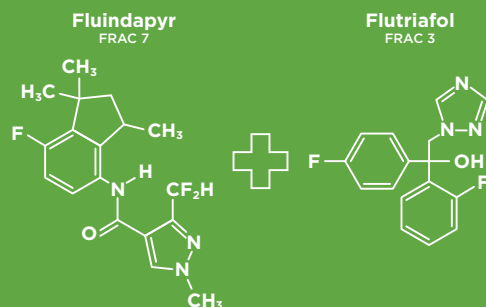
- Take-All Root Rot
- *Bipolaris* leaf spot
- Fairy Ring
- Large Patch
- Mini Ring (Leaf & Sheath Blight)

Kalida® also controls numerous other labeled diseases commonly found in warm-season turfgrasses

### LABELLED USE SITES:

- Golf Courses
- Commercial sites
- Industrial sites

### FRAC 7 + FRAC 3 = A PERFECT 10

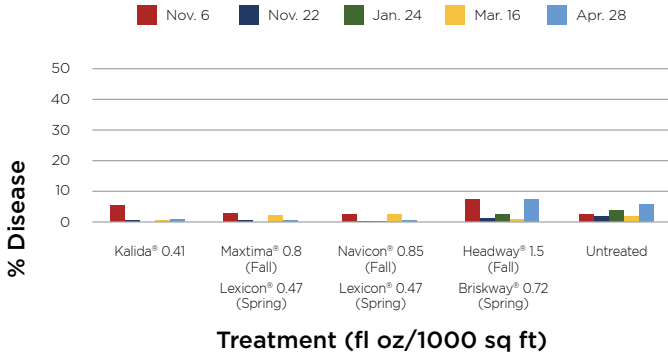


Fluindapyr is a new and novel succinate dehydrogenase inhibitor fungicide (SDHI). Its unique pyrazole carboxamide structure and methyl group give control of *Rhizoctonia* species as well as leaf and patch diseases.

Paired with flutriafol, the combined AI's reach level of control and spectrum that's hard to beat.

## TAKE ALL ROOT ROT CONTROL

### Take-all Root Rot Control

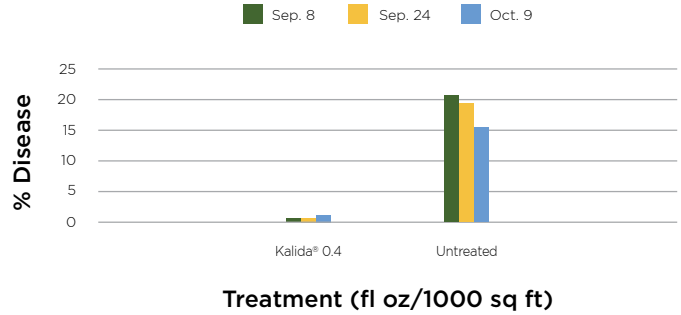


### Treatment (fl oz/1000 sq ft)

J. Kerns, Ph.D. | NC State University  
Initial treatments applied August 28, 2019  
28-day interval; 2 fall applications followed by 2 spring applications  
Bermudagrass Green

## MINI RING CONTROL

### Mini Ring Control (Leaf & Sheath Blight)



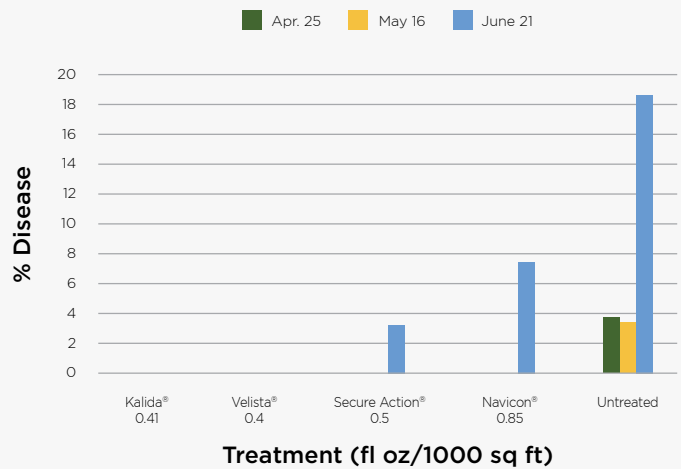
### Treatment (fl oz/1000 sq ft)

J. Roberts, Ph.D. | Clemson University  
Initial applications made June 11, 2020  
14-day interval; 4 applications  
Bermudagrass Green

*"The results from our studies have made me quite confident that Kalida® fungicide would be an excellent product to control Bipolaris leaf spot and I would have no problem recommending Kalida® to control Bipolaris leaf spot."*

David McCall, Ph.D.  
Virginia Tech University

### Bipolaris Leaf Spot Control



### Treatment (fl oz/1000 sq ft)

D. McCall, Ph.D. | Virginia Tech Univ.  
Initial applications made August 28, 2018  
14-Day Interval - 4 applications  
'MiniVerde' Ultradwarf Bermudagrass Green

*"Kalida® fungicide performed very well in our studies. It was similar to Navicon and Maxtima in a trial we conducted in 2019. Kalida® was very safe on ultra-dwarf Bermudagrass."*

Jim Kerns, Ph.D.  
North Carolina State University

*"Kalida® performed very well in trials for large patch... I would think a rotational application strategy with Kalida® and Fame would be an excellent option for superintendents. This combination will also provide protection from other pathogens while providing excellent control for large patch."*

Brandon Horvath, Ph.D.  
University of Tennessee